



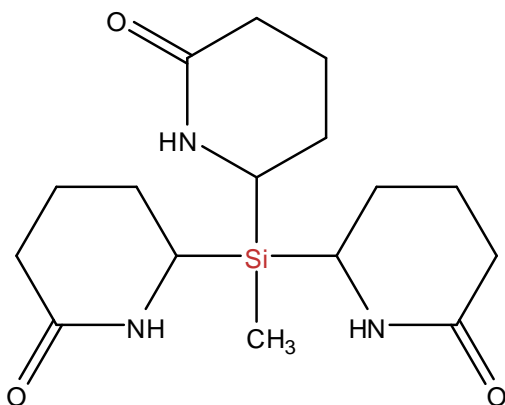
# SiSiB® PC9923 SILANE

- 1 -

## CHEMICAL NAME

Methyltricaprolactamsilane [Developmental]

## CHEMICAL STRUCTURE



## INTRODUCTION

SiSiB® PC9923 is a developmental silicon compound.

## TYPICAL PHYSICAL PROPERTIES

CAS No.	N/A
EINECS No.	N/A
Formula	C <sub>16</sub> H <sub>27</sub> N <sub>3</sub> O <sub>3</sub> Si
Molecular Weight	337.49
Boiling Point	--°C [760mmHg]
Flash Point	--°C
Color and Appearance	--
Density <sub>25/25°C</sub>	--
Refractive Index	--
Purity:	--

## APPLICATIONS

**Power Chemical**  
ISO9001 ISO14001 certified

Copyright© 2008 Power Chemical Corporation Ltd.  
SiSiB® is a registered trademark of PCC. For more  
knowledge regarding organosilanes, you may visit  
[www.SiSiB.com](http://www.SiSiB.com) or [www.PCC.asia](http://www.PCC.asia)



# SiSiB<sup>®</sup> PC9923 SILANE

- 2 -

SiSiB<sup>®</sup> PC9923 is a developmental silicon compound.

## PACKING AND STORAGE

Customized product packing is 100ml, 250ml, 500ml and 1000ml bottle. Industrialized product packing is 210L steel drum or 1000L IBC tote.

In the unopened original container SiSiB<sup>®</sup> PC9923 has a shelf life of one year in a dry and cool place.

## NOTES

All information in the leaflet is based on our present knowledge and experience. We reserve the right to make any changes according to technological progress or further developments. Performance of the product described herein should be verified by testing.

We specifically disclaim any other express or implied warranty of fitness for a particular purpose or merchantability. We disclaim liability for any incidental or consequential damages.

Please send all technical questions concerning quality and product safety to: [silanes@SiSiB.com](mailto:silanes@SiSiB.com).

**Power Chemical**  
ISO9001 ISO14001 certificated

Copyright© 2008 Power Chemical Corporation Ltd.  
SiSiB<sup>®</sup> is a registered trademark of PCC. For more knowledge regarding organosilanes, you may visit [www.SiSiB.com](http://www.SiSiB.com) or [www.PCC.asia](http://www.PCC.asia)